

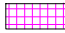


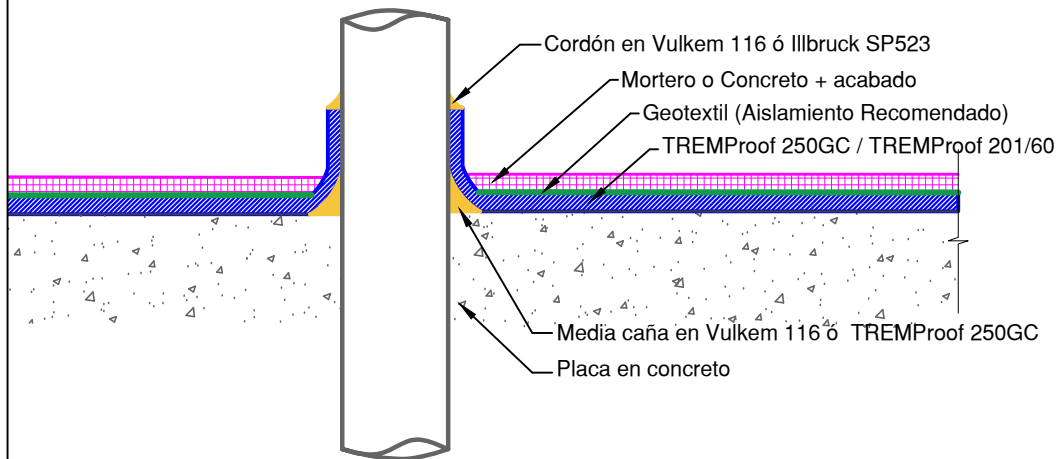
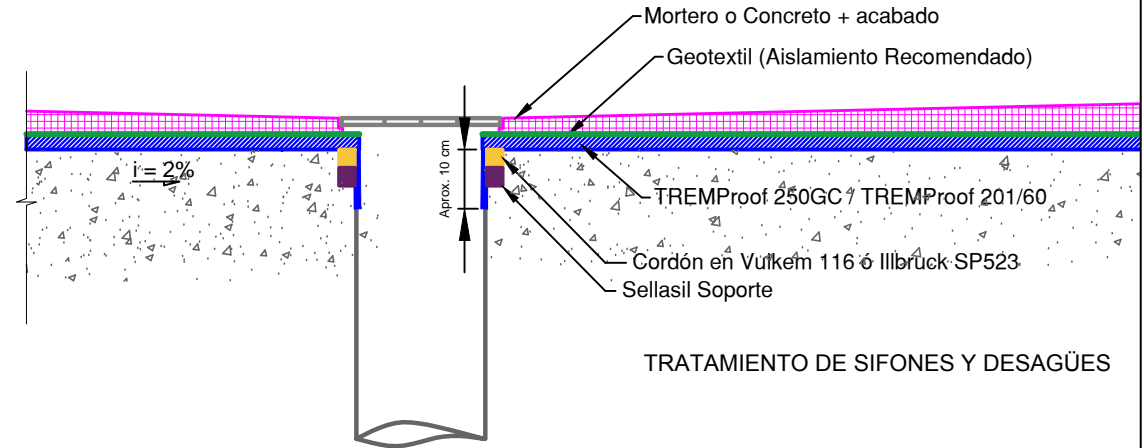




EUCAL GROUP
TOXEMENT



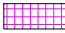


Detalle D7/VP_imp.PU	Contiene TRATAMIENTO DE SIFONES Y PENETRACIONES	Sistema TREMProof 250GC - TREMProof 201/60	Línea IMPERMEABILIZACIÓN DE PLACAS Y CUBIERTAS	Fecha 24/07/15	Versión V_01	
Convenciones	 TREMProof 201/ 60 ó 250GC	 Protección	 Mortero ó Concreto + acabado	 Vulkem 116	 Estructura en concreto	Escala Sin escala

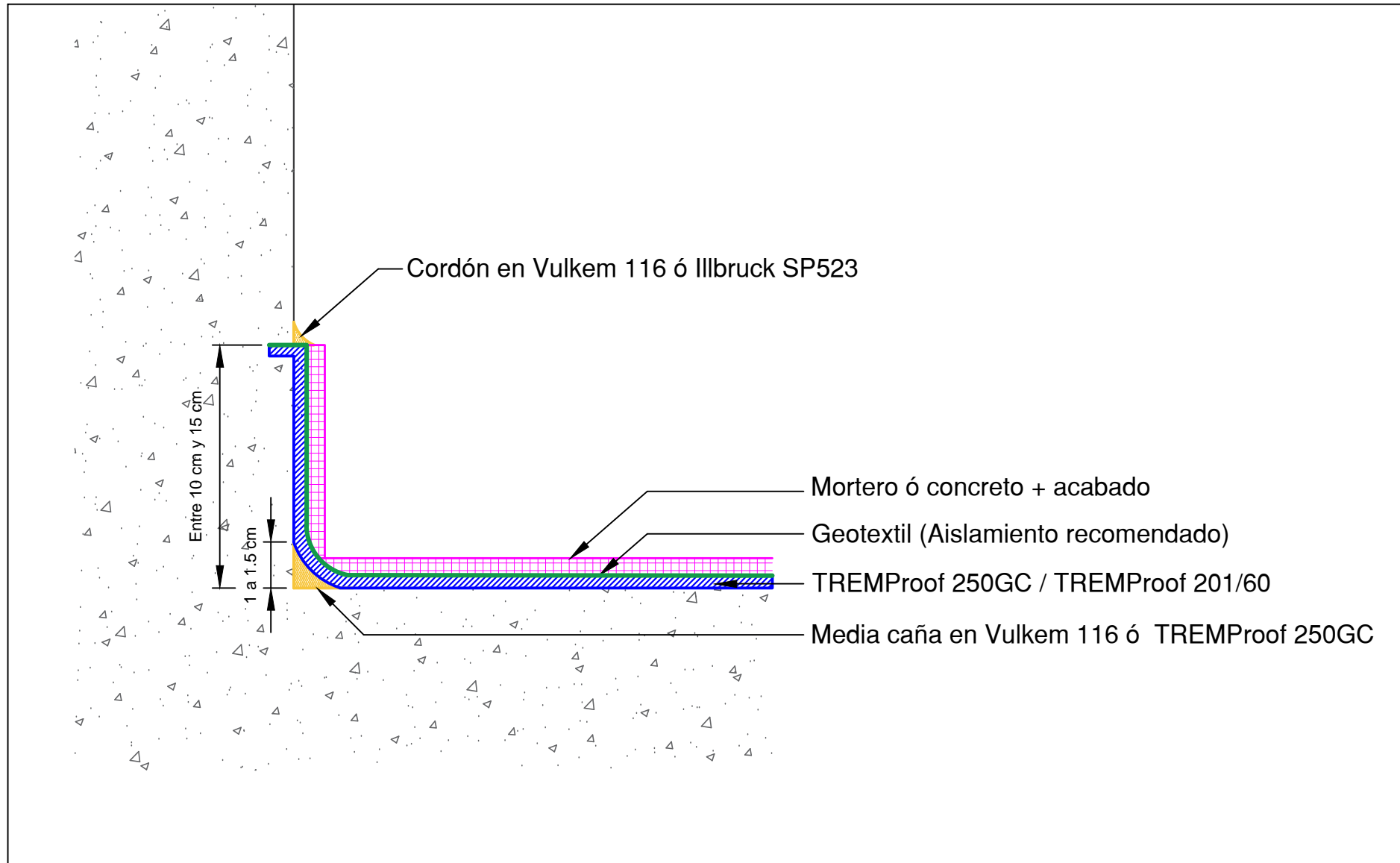


TRATAMIENTO DE PENETRACIONES CONTINUAS





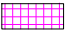


EUCLID GROUP
TOXEMENT

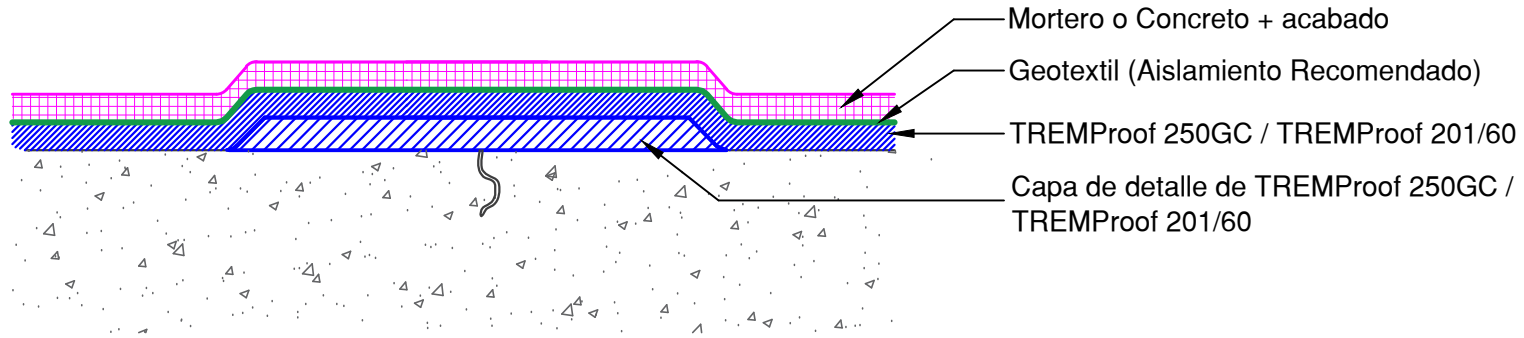
Detalle D8/VP_Imp.PU	Contiene DESARROLLO TÍPICO DE MEDIAS CAÑAS	Sistema TREMPROOF 250GC - TREMPROOF 201/60	Línea IMPERMEABILIZACIÓN DE PLACAS Y CUBIERTAS	Fecha 24/07/15	Versión V_01	
Convenciones	 TREMPProof 201/ 60 ó 250GC	 Protección	 Mortero ó Concreto + acabado	 Vulkem 116	 Estructura en concreto	Escala Sin escala



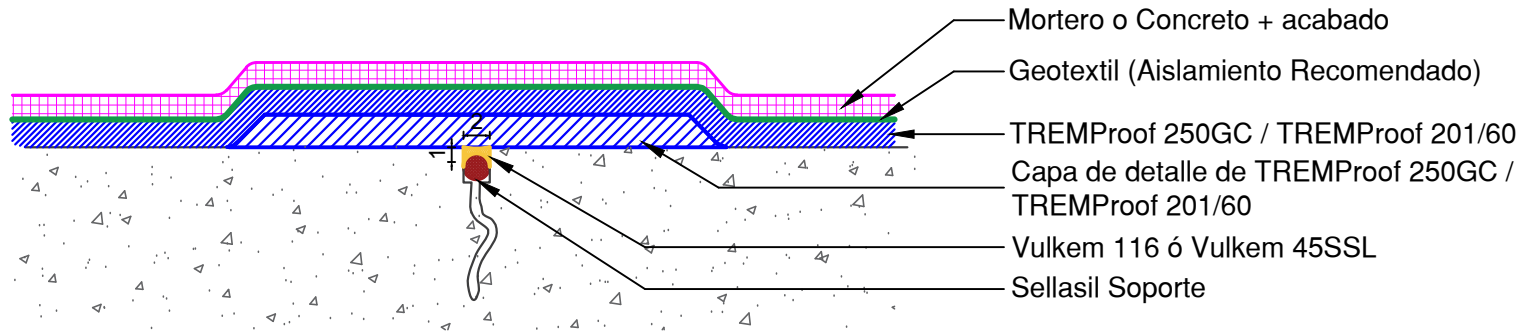


**EUCLID GROUP
TOXEMENT**

Detalle D9/VP_imp.PU	Contiene TRATAMIENTO DE FISURAS	Sistema TREMPOOF 250GC - TREMPOOF 201/60	Línea IMPERMEABILIZACIÓN DE PLACAS Y CUBIERTAS	Fecha 24/07/15	Versión V_01	
Convenciones	 TREMProof 201/ 60 ó 250GC	 Protección	 Mortero ó Concreto + acabado	 Vulkem 116	 Estructura en concreto	Escala Sin escala



TRATAMIENTO DE FISURAS MENORES A 1.6 mm



TRATAMIENTO DE FISURAS MAYORES A 1.6 mm